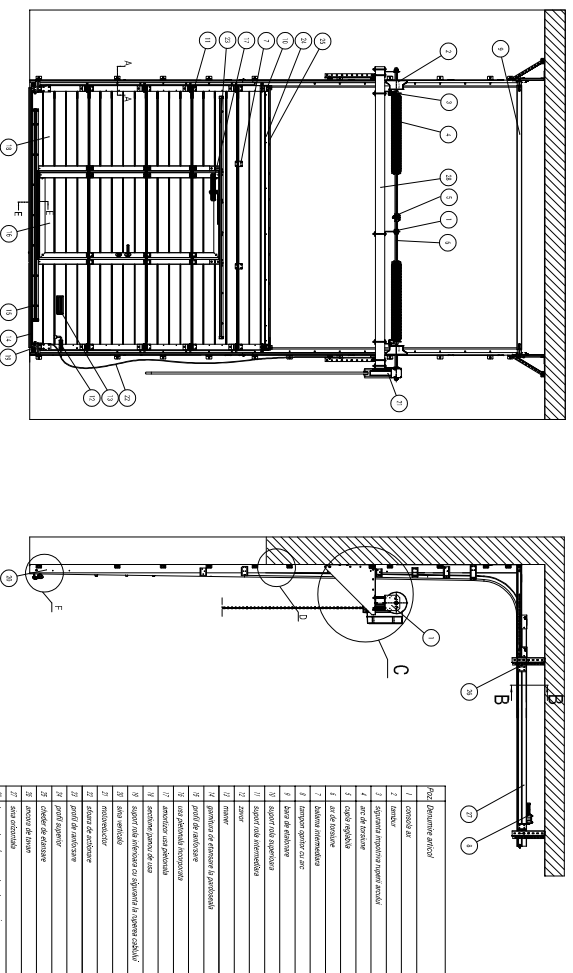


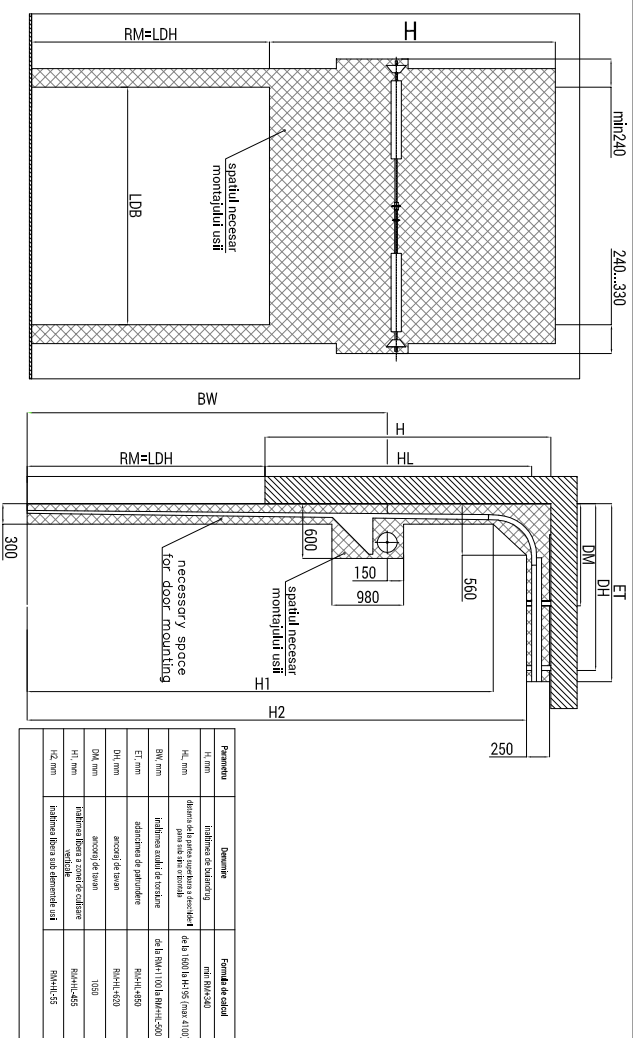
Usa sectională industrială cu sistem de rabatare SUPRAINALTATA CU AX JOS

Descrierea construcției ușii sectionale

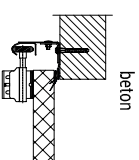


Prod.	Denumire articol
1	motor ac
2	zincare
3	garnitură
4	garnitură împotriva vântului
5	ac de siguranță
6	cablu de siguranță
7	ac de siguranță
8	balama intermediară
9	limbuș opozițional
10	balot de elasticitate
11	suport role intermediară
12	role
13	garnitură de elasticitate și protecție
14	suport role intermediară
15	role
16	role
17	role
18	role
19	role
20	role
21	role
22	role
23	role
24	role
25	role
26	role
27	role
28	role
29	role
30	role

Spațiile necesare pentru montaj

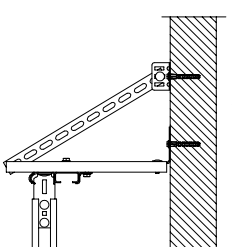


A(5:1)



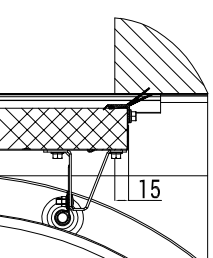
b) montajul șinei verticale pe perete din beton

B(5:1)



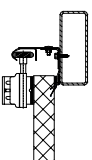
a) ancoaraj de placa de beton

D(10:1)

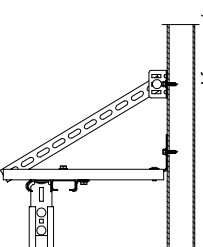


Detaliu de expansiune pe bulandrug

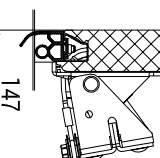
d) montajul șinei verticale pe structura metalică



b) ancoaraj pe structura metalică

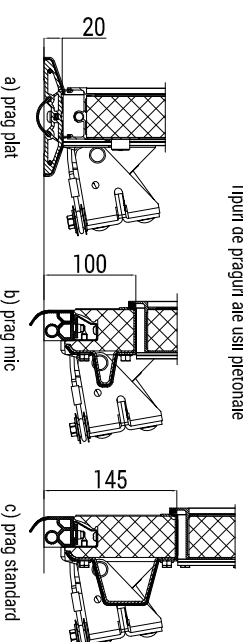


F(10:1)



E(10:1)

Tipuri de praguri ale ușii pietonale



a) prag plat

b) prag mic

c) prag standard