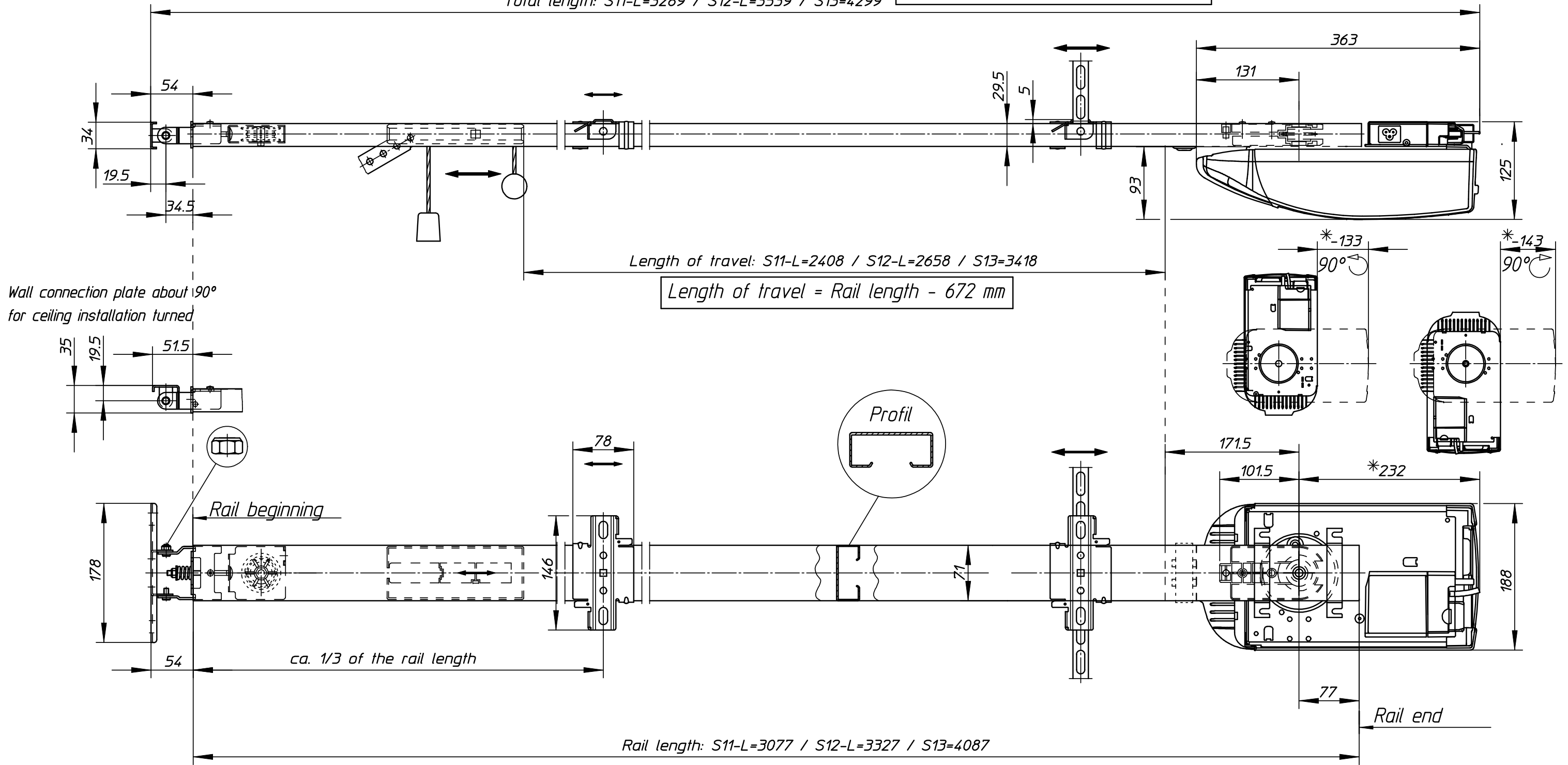


Total length = Rail length + 209 mm

Total length: S11-L=3289 / S12-L=3539 / S13=4299



Rail length S 11-L = 3077 for up-and-over doors up to 2500 high and sectional doors up to 2250 high (N-fitting) and 2125 high (L-/Z-fitting)  
 Rail length S 12-L = 3327 for up-and-over doors up to 2750 high and sectional doors up to 2500 high (N-fitting) and 2375 high (L-/Z-fitting)  
 Rail length S 13 = 4087 for up-and-over doors up to 3500 high and sectional doors up to 3250 high (N-fitting) and 3125 high (L-/Z-fitting)

**Calculation of extra rail length**  
 Up-and-over door: rail length = door high + 585  
 Sectional doors (N-fitting): rail length = door high + 830  
 Sectional doors (L-/Z-fitting): rail length = door high + 955

Sectional door fitting N = Doors with normal recession curve  
 Sectional door fitting L = Doors with low headroom fitting  
 Sectional door fitting Z = Doors with tension springs at the side

*Subject to modification!*

All dimensions in mm

Stück	Benennung			Teil	Werkstoff	DIN/Zchnng.Nr.	Bemerkungen
Zul. Abw. n. DIN ISO 2768 mittel	2013	Datum	Name	Marantec Antriebs- und Steuerungstechnik GmbH & Co. KG Remser Brook 11 * 33428 Marienfeld Telefon (05247) 705-0 Telefax (05247) 705-292			
	Gezeichnet	25.06.	Sunderkötter				
	Geprüft						
Index	Änderungen		Maßstab	Comf. 260, 270, 280			Zeichnungs Nr.: M/16968
a	02.07.13	Sun.	ohne				
b							
c							
d							
e				Me10/WS1/Sun/Comf_260-270-280-Prinz_GB			Ersetzt durch: