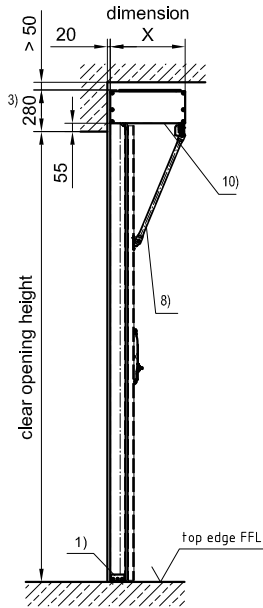
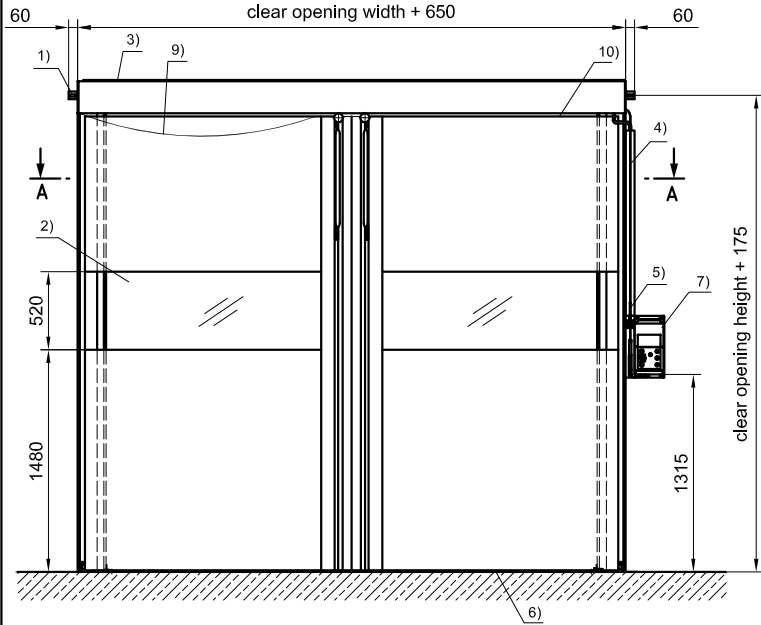


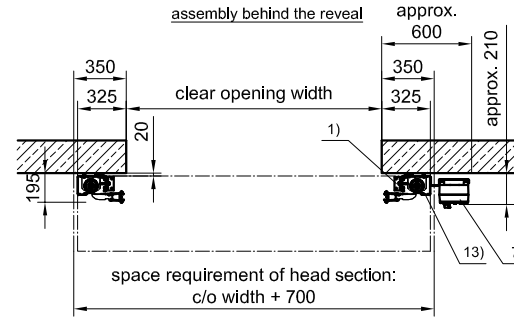
view from inside

single skinned
clear opening width + 650

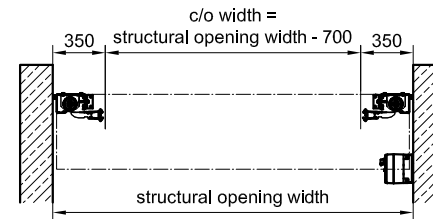


section A - A

assembly behind the reveal

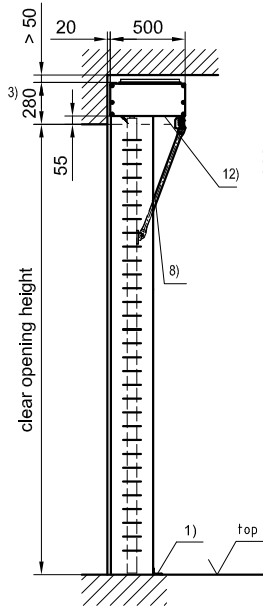
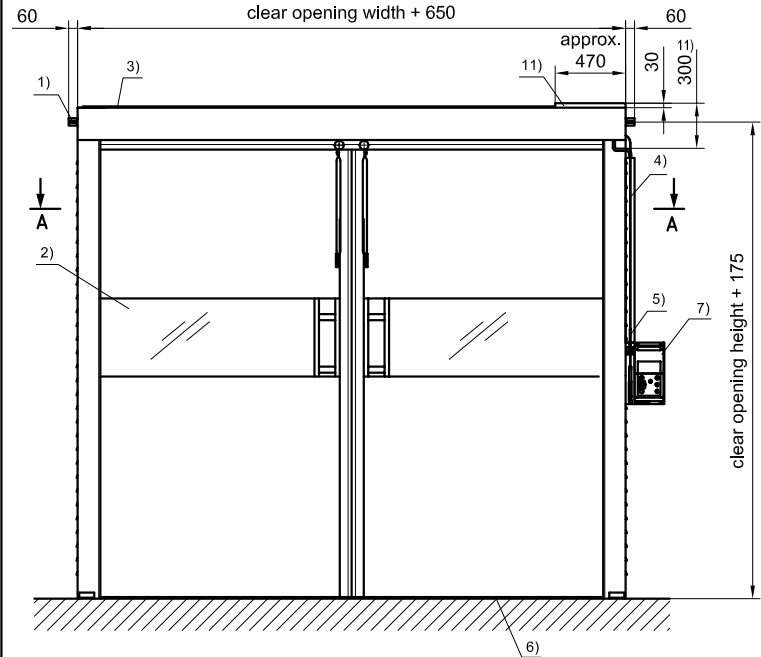


assembly within the reveal



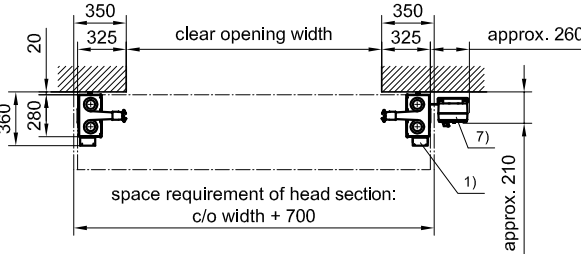
view from inside

double skinned
clear opening width + 650

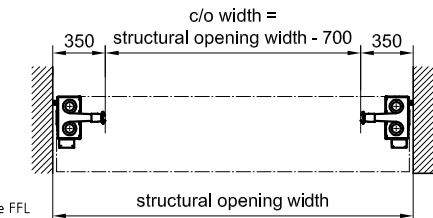


section A - A

assembly behind the reveal



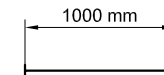
assembly within the reveal



dimension X	size	type of door
400 (for c/o height < 3300 and c/o width < 3500)	BG I	single skinned
500 (for c/o height 3300 - 4500 or c/o width 3500 - 4750)	BG II	single skinned double skinned
530 (special implementation upon request)	BG II reinforced	single skinned double skinned

- 1) fixing bracket
- 2) vision element
- 3) top cover
- 4) cable duct
- 5) emergency operation typically right side
- 6) function gap
- 7) Standard control panel 370 x 194 x 155 - to be mounted either on left or right jamb. As an alternative wall mounting is possible. Special control panel 600 x 600 x 200 - Novosprint with escape route approval - to be mounted on the wall either on left or right hand side.
- 8) rigit stay bar: option: anti-crush protection with an unlatch mechanism for c/o height > 2800 for c/o height ≤ 2800: rigit stay bar = horizontal position
- 9) trailing cable c/o height > 2800
- 10) bottom cover incl. cable guide for c/o height ≤ 2800 standard for c/o height > 2800 option
- 11) protective cap
- 12) bottom cover is standard
- 13) cover for jamb housing is optional

- option: door system is suitable for escape routes and rescue paths (from c/o width 1601)
- for outdoor installations BG II is typically used
- concerning colour and type of surface, please refer to the technical data sheet of the NOVOSPRINT Syncro GA
- dimensions valid for single- and double-skinned doors



NOVOSPRINT Syncro GA

Feb. 2017

CAD:

1.05/0492

BUTZBACH

www.butzbach.com

subject to technical alterations!

NOVOSPRINT_Syncro_GA_en

Schutzvermerk ISO 16016

Tel. +49-8337-901-0