

File: **1413-0241** Rev: **01**

Drawn By: L. Heymans Date: 23/06/2014

Description: **M2 Fixation points Freezer**

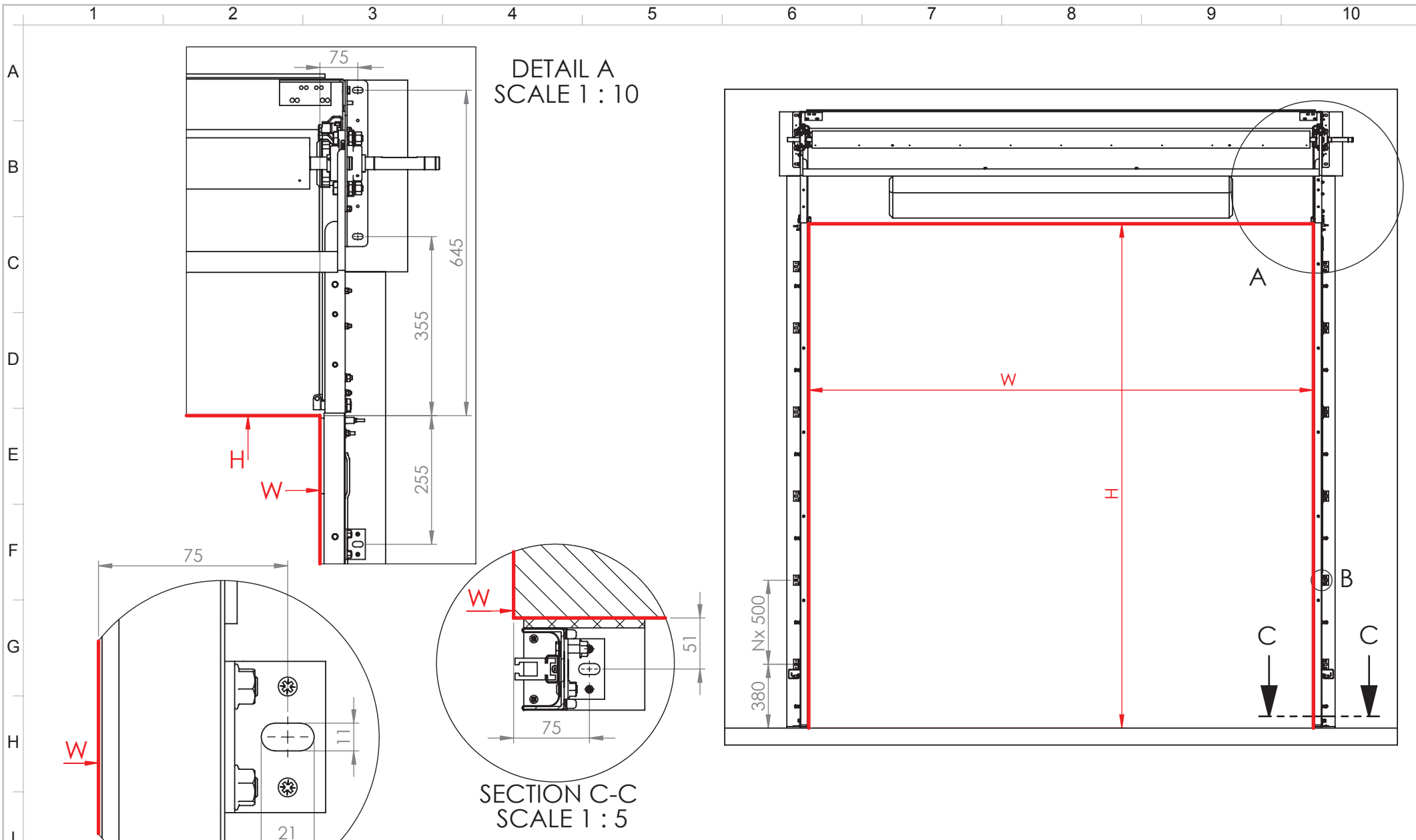
Approved By: C. Fauquette Scale: 1:30 Size: A4

Rev	Change	Date	By

DYNACO
ENTRE//MATIC

General tolerances
 ISO 2768-mK-E
 DIN 6930
 DIN 6935

DYBE-P77-V15A REV 05. Date: 21/11/2017



File: **1413-0392** Rev: **2**

Description: **M2
Fixation points
Freezer with blower**

Drawn By:
L. Heymans

Approved By:
K. Pedé

Date:
16/03/2015

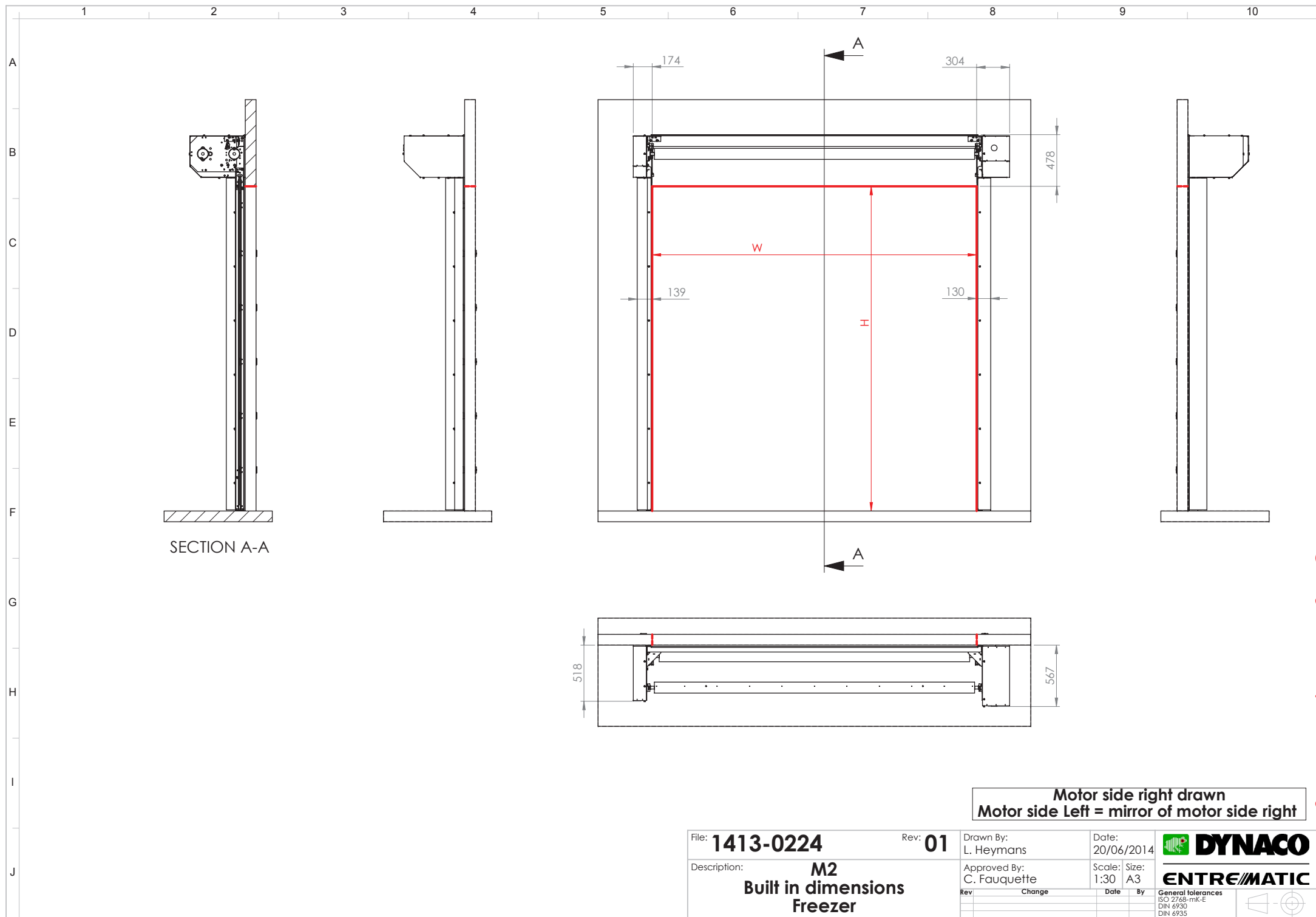
Scale: 1:30
Size: A4

Rev	Change	Date	By
2	Extended freezer insulation	16/03/15	

DYNACO
ENTRE//MATIC





General tolerances
ISO 2768-mK-E
DIN 6930
DIN 6935

DY-BE-P77-V15A REV 05. Date: 21/11/2017



SECTION A-A

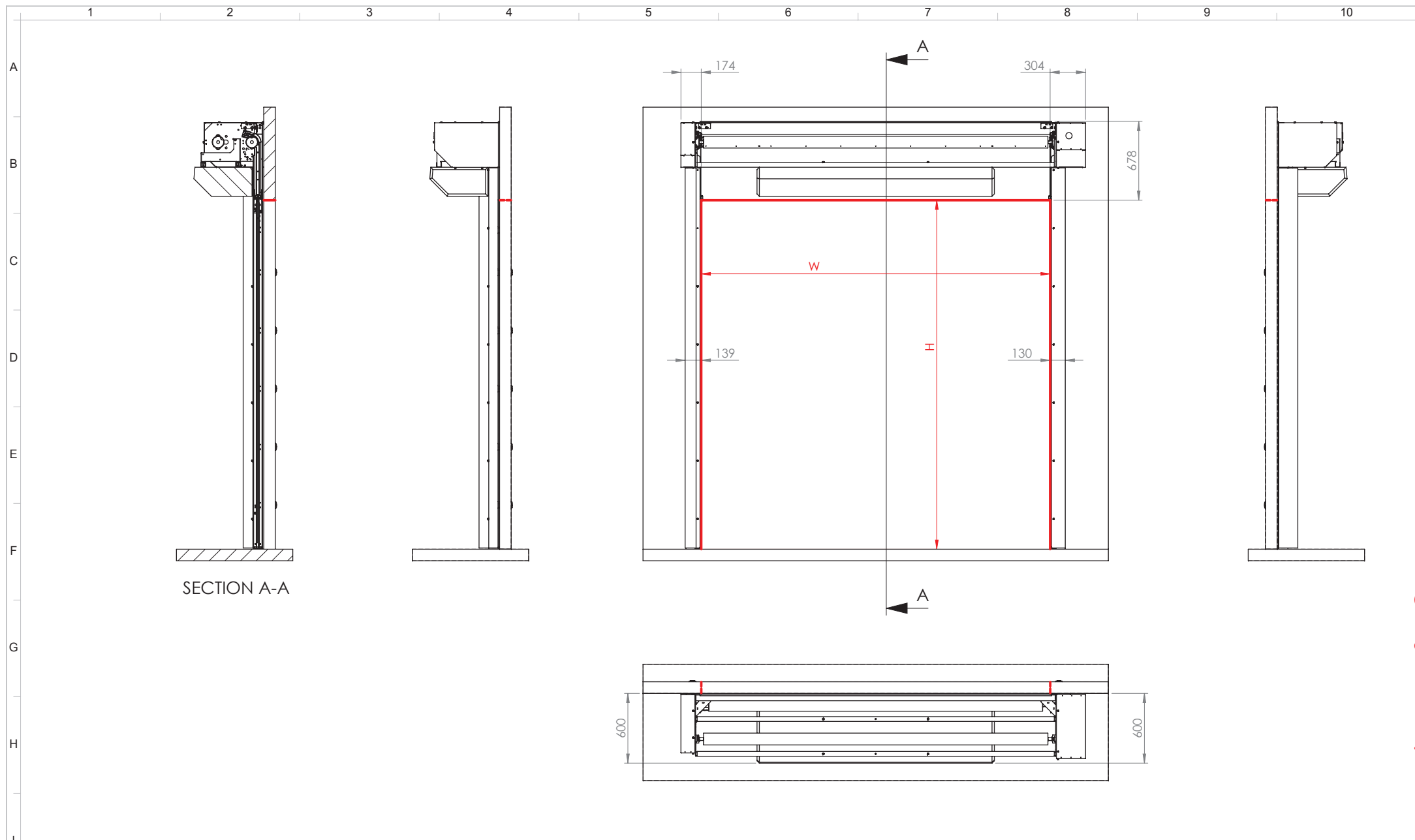
Motor side right drawn
Motor side Left = mirror of motor side right

File: 1413-0224	Rev: 01	Drawn By: L. Heymans	Date: 20/06/2014	 ENTRE//MATIC													
Description: M2 Built in dimensions Freezer	Approved By: C. Fauquette	Scale: 1:30	Size: A3														
<table border="1"> <thead> <tr> <th>Rev</th> <th>Change</th> <th>Date</th> <th>By</th> </tr> </thead> <tbody> <tr> <td> </td> <td> </td> <td> </td> <td> </td> </tr> </tbody> </table>		Rev	Change	Date	By					<table border="1"> <thead> <tr> <th colspan="2">General tolerances</th> </tr> </thead> <tbody> <tr> <td>ISO 2768-mK-E</td> <td rowspan="3">  </td> </tr> <tr> <td>DIN 6930</td> </tr> <tr> <td>DIN 6935</td> </tr> </tbody> </table>		General tolerances		ISO 2768-mK-E		DIN 6930	DIN 6935
Rev	Change	Date	By														
General tolerances																	
ISO 2768-mK-E																	
DIN 6930																	
DIN 6935																	



© All rights reserved by Dynaco

This Information is Confidential ©All rights reserved by Entrematic Belgium

DY-BE-P77-V15A REV 05. Date: 21/11/2017

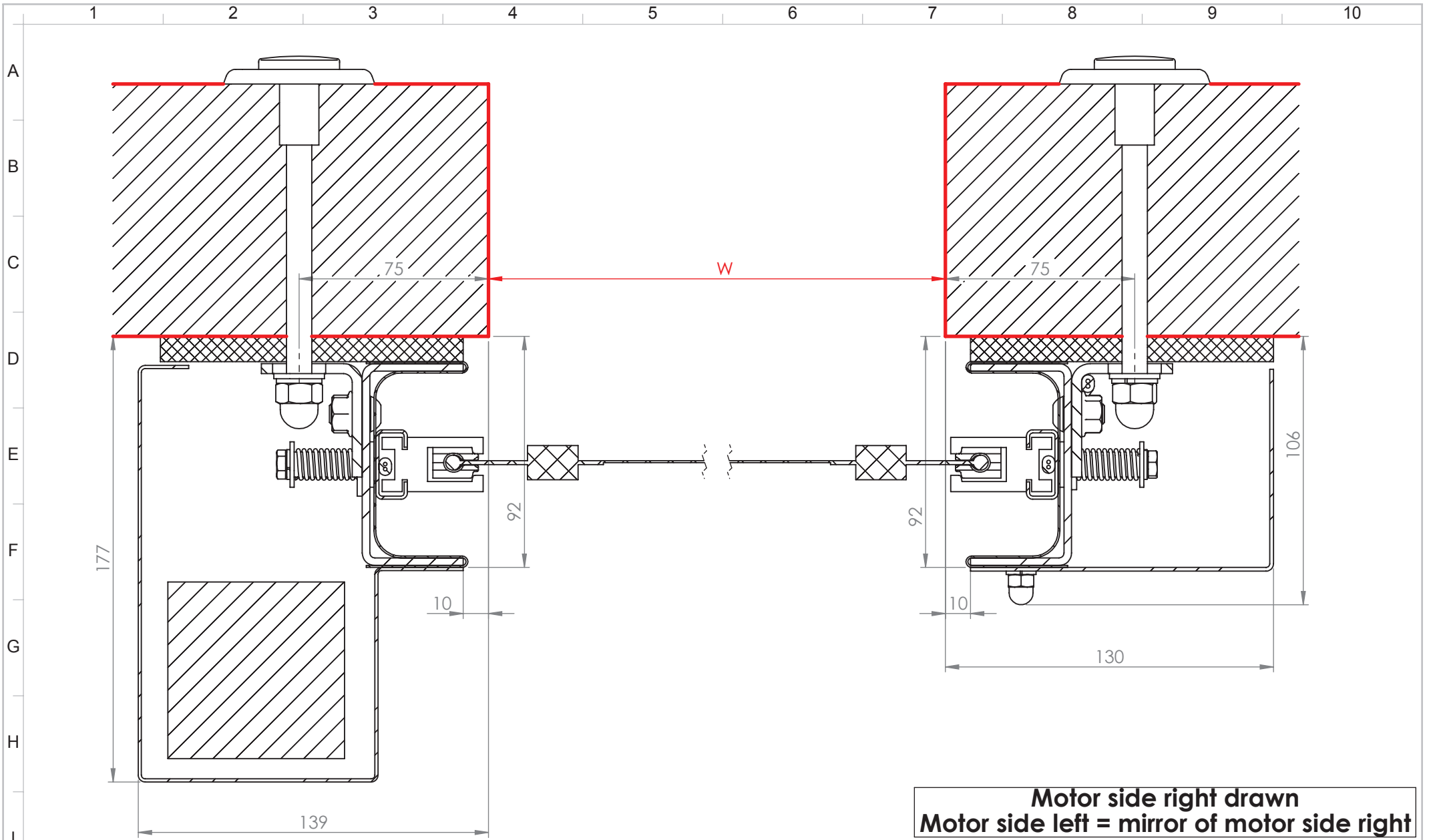


Motor side right drawn
Motor side Left = mirror of motor side right



File: 1413-0391	Rev: 2	Drawn By: L. Heymans	Date: 16/03/2015	 ENTRE//MATIC								
Description: M2 Built in dimensions Freezer with blower	Approved By: K. Pede	Scale: 1:30	Size: A3									
<table border="1"> <thead> <tr> <th>Rev</th> <th>Change</th> <th>Date</th> <th>By</th> </tr> </thead> <tbody> <tr> <td>2</td> <td>Longer side guide covers</td> <td>16/03/15</td> <td>LHE</td> </tr> </tbody> </table>		Rev	Change	Date	By	2	Longer side guide covers	16/03/15	LHE	General tolerances ISO 2768-mK-E DIN 6930 DIN 6935		
Rev	Change	Date	By									
2	Longer side guide covers	16/03/15	LHE									

© All rights reserved by Dynaco

This Information is Confidential ©All rights reserved by Entrematic Belgium



Motor side right drawn
Motor side left = mirror of motor side right

File: 1413-0344	Rev: 01	Drawn By: L. Heymans	Date: 11/09/2014	 DYNACO  ENTRE/MATIC		
Description: M2 Side guide section view Freezer		Approved By: C. Fauquette	Scale: Size: 1:2 A4			
		Rev	Change	Date	By	General tolerances ISO 2768-mK-E DIN 6930 DIN 6935