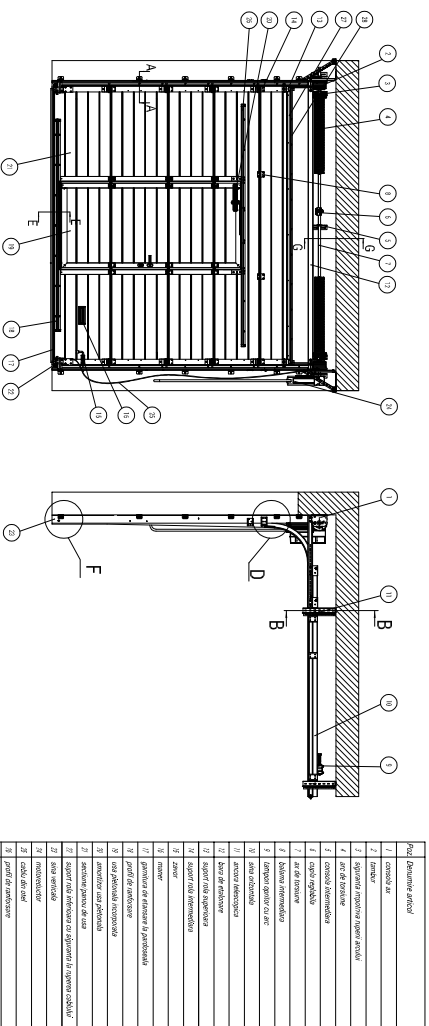
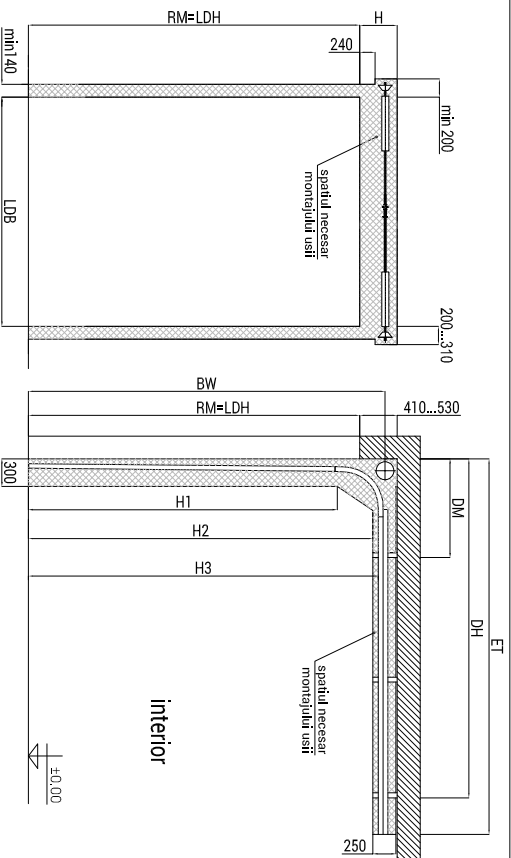


Usa sectională industrială cu sistem de rabatare STANDARD

Descrierea construcției uși sectionale

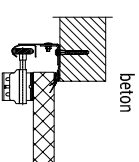


Spațiile necesare pentru montaj



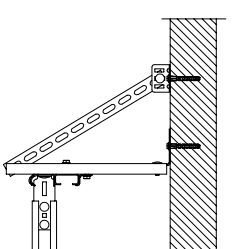
Parametru	Denumire	Familia de calcul
H, mm	înălțimea de buclandrug	mi3410 (RM-3000)
BW, mm	înălțimea exclusivă	mi3430 (3000-RM-4000)
ET, mm	adâncimea de pătrundere	mi3530 (RM-4000)
DH, mm	ancoraj de tavan	de la RM-327 până la RM-387
DM, mm	ancoraj de tavan	RM-450
H1, mm	înălțimea liberă a zonei verticale de culsare	1050
H2, mm	înălțimea liberă sub elementele ușii	RM-245
H3, mm	înălțimea liberă sub șina orizontală	RM-145
		RM-202

A(5:1)



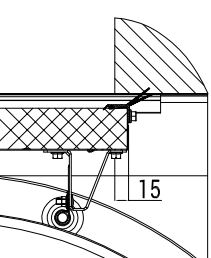
b) montajul șinei verticale pe perete din beton

B(5:1)



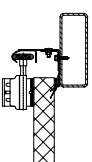
a) ancoraj de placa de beton

D(10:1)

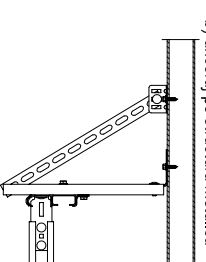


Detaliu de expansiune pe buclandrug

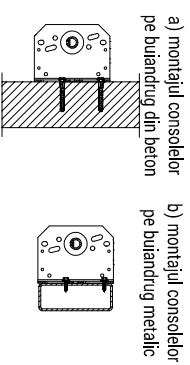
d) montajul șinei verticale pe structura metalică



b) ancoraj pe structura metalică



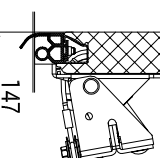
G-G(5:1)



a) montajul consolelor pe buclandrug din beton

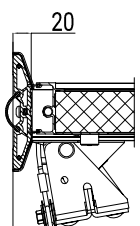
b) montajul consolelor pe buclandrug metalic

F(10:1)

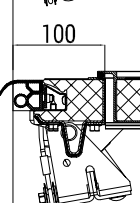


E(10:1)

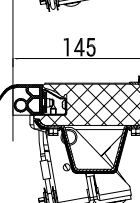
Tipuri de prașuri ale ușii pietonale



a) praș plat



b) praș mic



c) praș standard